

elesa
Original design BS52R

Specification

Plastic, Polyamide (PA)
Black, matte finish

RoHS

Technical Information

Plastic Characteristics QVX

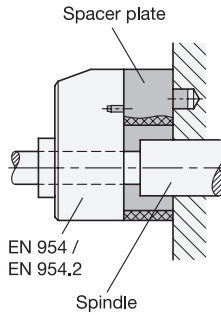
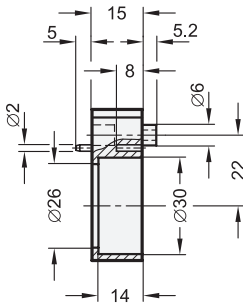
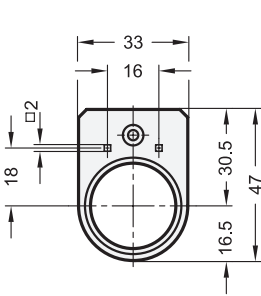
The spacer plate EN 953.1 in combination with the digital position indicators EN 953 / EN 953.2 are used to bridge the shaft shoulders, set collars and so on.

The bore holes Ø 2.2 mm are used for the machine-side fastening with e.g. socket button head self-tapping screws in accordance with DIN ISO 7049.

see also...	Page
EN 953 Digital Position Indicators (Steel Shaft Receptacle)	QVX
EN 953.2 Digital Position Indicators (Stainless Steel Shaft Receptacle)	QVX

How to order

EN 953.1



elesa
Original design BS51

Specification

Plastic, Polyamide (PA)
Black, matte finish

RoHS

Technical Information

Plastic Characteristics QVX

The spacer plate EN 954.1 in combination with the digital position indicators EN 954 / EN 954.2 are used to bridge the shaft shoulders, set collars and so on.

The square bore holes are used for the machine-side fastening with e.g. socket button head self-tapping screws in accordance with DIN ISO 7049.

see also...	Page
EN 954 Digital Position Indicators (Steel Shaft Receptacle)	QVX
EN 954.2 Digital Position Indicators (Stainless Steel Shaft Receptacle)	QVX

How to order

EN 954.1

1.1
1.2
1.3
1.4
2.1
2.2
2.3
2.4

