

2 Type
BI Vertical clamping arm

Metric table

Dimensions in: millimeters - inches

| Size (Piston Ø) | Max. clamping moment in Nm at 6 bar | F _S Clamping force at r at 6 bar | F _H Holding capacity at r | a | b -0.2 | d ₁ h8 | d ₂ | d ₃ H8 | d ₄ | d ₅ | h ₁ | h ₂ | l ₁ -0.5 |
|-----------------|-------------------------------------|---|--------------------------------------|--------------|-------------|-------------------|----------------|-------------------|----------------|----------------|----------------|----------------|---------------------|
| 20 | 60 | 1250 N 281 lbf | 4000 N 899 lbf | 10.5 0.41 | 10 0.394 | 28 1.102 | M 5 | 7 0.276 | 4.2 0.17 | M 5 | 16 0.63 | 16 0.63 | 150 5.91 |
| 32 | 150 | 2220 N 499 lbf | 6962 N 1565 lbf | 15.5 0.61 | 12 0.472 | 40 1.575 | M 6 | 9 0.354 | 5 0.20 | G 1/8 | 21 0.83 | 21 0.83 | 206 8.11 |
| 40 | 300 | 3640 N 818 lbf | 9139 N 2055 lbf | 18.5 0.73 | 16 0.630 | 50 1.969 | M 8 | 11 0.433 | 6.8 0.27 | G 1/8 | 26 1.02 | 26 1.02 | 244 9.61 |
| 50 | 475 | 4900 N 1102 lbf | 12331 N 2772 lbf | 21.5 0.85 | 18 0.709 | 60 2.362 | M 10 | 13 0.512 | 8.5 0.33 | G 1/8 | 31 1.22 | 31 1.22 | 279 10.98 |

| Size (Piston Ø) | l ₂ -0.5 | l ₃ | l ₄ | l ₅ | l ₆ | l ₇ -0.5 | m ₁ ±0.01 | m ₂ | m ₃ ±0.01 | m ₄ ±0.01 | m ₅ ±0.01 | m ₆ | r | s | t |
|-----------------|---------------------|----------------|----------------|----------------|----------------|---------------------|----------------------|----------------|----------------------|----------------------|----------------------|----------------|--------------|------------|------------|
| 20 | 171 6.73 | 70 2.76 | 21 0.83 | 4.5 0.18 | 21 0.83 | 97 3.82 | 12 0.4724 | 7.5 0.30 | 17 0.6693 | 34 1.3386 | 22 0.8661 | 13 0.51 | 47.5 1.87 | 32 1.26 | 13 0.51 |
| 32 | 237 9.33 | 91 3.58 | 31 1.22 | 6 0.24 | 31 1.22 | 133 5.24 | 18 0.7087 | 10 0.39 | 25 0.9843 | 51 2.0079 | 30 1.1811 | 22 0.87 | 67.5 2.66 | 42 1.65 | 15 0.59 |
| 40 | 282 11.10 | 104 4.09 | 38 1.50 | 7.5 0.30 | 38 1.50 | 155 6.10 | 22 0.8661 | 13 0.51 | 30 1.1811 | 62 2.4409 | 37 1.4567 | 25 0.98 | 82.5 3.25 | 52 2.05 | 18 0.71 |
| 50 | 323 12.72 | 110.5 4.35 | 44 1.73 | 8 0.31 | 44 1.73 | 174 6.85 | 27 1.0630 | 12 0.47 | 47 1.8504 | 71.5 2.8150 | 44 1.7323 | 35 1.38 | 96.5 3.80 | 62 2.44 | 21 0.83 |

Specification

- Clamp
Steel C45
Chemically nickel plated **NC**
- Max. pressure 10 bar
- ISO Fundamental Tolerances → page 2129
- RoHS compliant

On request

- With nonstick coating for protection against welding spray and corrosion

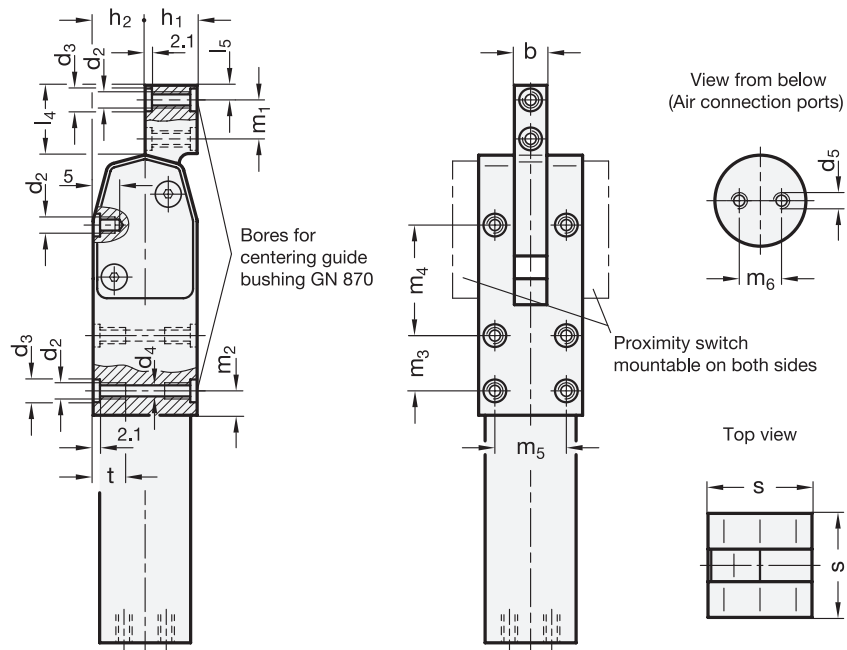
Information

The maximum clamping moment of GN 865 pneumatic fastening clamps is reached once the clamping arm is at the end of its stroke. For this reason the working stroke should be completed as closely as possible to the stroke end.

see also...

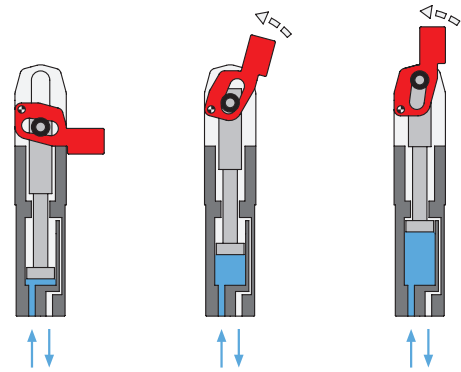
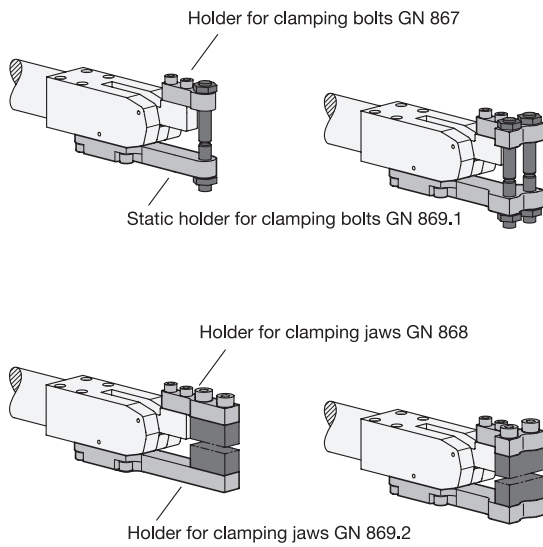
- List of Pneumatic Clamps → page 834
- Operating Principle / Mounting Methods → starting from page 864
- Centering Guide Bushings GN 870 → page 875
- Sensors GN 893.1 / GN 893.2 / GN 893.3 / GN 893.4 → page 876
- Single Post Coupling / Y-Coupling Accessories GN 867 → page 870

| | |
|-----------------------|----------|
| How to order | 1 Size |
| GN865-40-BI-NC | 2 Type |
| | 3 Finish |



Installation examples

Principle of operation



1.1
1.2
1.3
1.4
2.1
2.2
2.3
2.4

