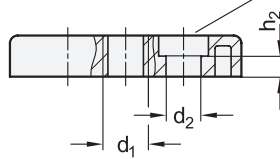
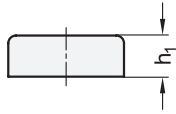


30x60 / 40x80 / 45x90

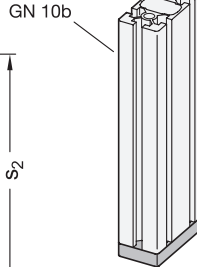
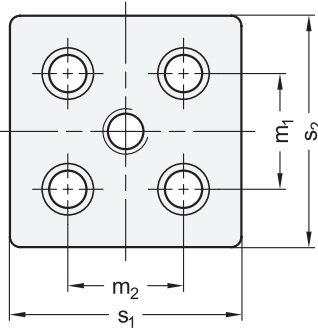
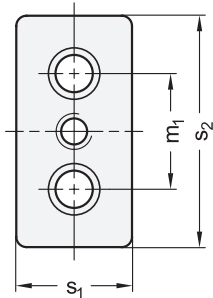
80x80 / 90x90

Countersink for socket cap screw  
DIN 7984

Metric



Application example



5 Type

A Without screws

Metric table

1	2	3	4	Dimensions in: millimeters / inches						
s <sub>1</sub>	s <sub>2</sub>	n	d <sub>1</sub>	d <sub>2</sub> For screw	h <sub>1</sub>	h <sub>2</sub>	m <sub>1</sub>	m <sub>2</sub>	Grid size	
30 1.18	60 2.36	8 0.31	M 10	M 12	M 8 / S 8	12 0.47	3.2 0.13	30 1.18	-	30 1.18
40 1.57	80 3.15	10 0.39	M 10	M 12	M 12 / S 12	16 0.63	8 0.31	40 1.57	-	40 1.57
45 1.77	90 3.54	10 0.39	M 12	M 14	M 12 / S 12	16 0.63	8 0.31	45 1.77	-	45 1.77
80 3.15	80 3.15	10 0.39	M 12	M 16	M 12 / S 12	16 0.63	8 0.31	40 1.57	40 1.57	40 1.57
90* 3.54	90 3.54	10 0.39	M 16	M 20	M 12 / S 12	16 0.63	8 0.31	45 1.77	45 1.77	45 1.77

\* Only compatible with profile type L

Specification

Zinc die-cast

Black

RoHS

6

ZS

Support / base plates GN 80b affix attachments such as leveling feet or castors to aluminum profiles.

They are installed in the profile holes on the end faces using suitably tapped threaded holes or thread-forming screws.

see also...

GN 10b Aluminum Profiles (Profile Type Light) QVX

GN 10b Aluminum Profiles (Profile Type Heavy) QVX

Technical Information

Assembly Instructions / Profile Machining QVX

Accessory

GN 21b Central Screws QVX

How to order

1	Width s <sub>1</sub>
2	Length s <sub>2</sub>
3	Slot width n
4	Thread d <sub>1</sub>
5	Type
6	Material / Color

GN80b-459010M12-A-ZS

3.1  
3.2  
3.3  
3.4  
3.5  
3.6  
3.7  
3.8  
3.9  
3.10

**Assembly Instructions / Profile Machining**

