

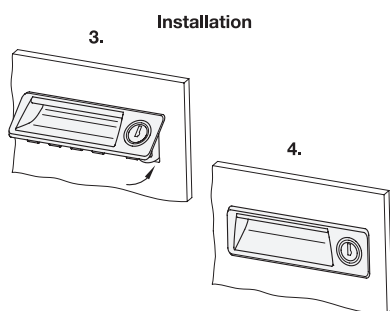
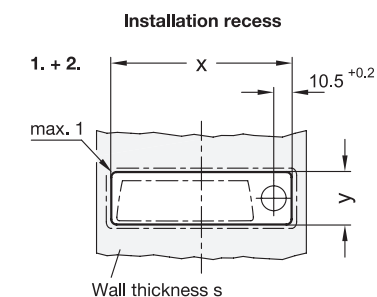
**Metric table**

Dimensions in: millimeters - inches

EN 731.2 (Steel latch arm)							F <sub>1</sub>	F <sub>2</sub>
Latch arm crimping z	A <sub>1</sub>	A <sub>2</sub>	Latch arm length l					
0 0	23 0.91	23 0.91	18 0.71	22 0.87	32 1.26	46 1.81	3600 N 809 lbf	1500 N 337 lbf
2 0.08	21 0.83	25 0.98	25 0.98	28 1.10	35 1.38	-	3600 N 809 lbf	1500 N 337 lbf
5 0.20	18 0.71	28 1.10	30 1.18	33 1.30	36 1.42	-	3600 N 809 lbf	1500 N 337 lbf
8 0.31	15 0.59	31 1.22	33 1.30	-	-	-	3600 N 809 lbf	1500 N 337 lbf
12 0.47	11 0.43	35 1.38	27 1.06	-	-	-	3600 N 809 lbf	1500 N 337 lbf

EN 731.5 (Stainless steel latch arm, only available in type DK, VK and VDE)							F <sub>1</sub>	F <sub>2</sub>
Latch arm crimping z	A <sub>1</sub>	A <sub>2</sub>	Latch arm length l					
0 0	23 0.91	23 0.91	20 0.79	32 1.26	46 1.81	-	3600 N 809 lbf	1500 N 337 lbf
3 0.12	20 0.79	26 1.02	45 1.77	-	-	-	3600 N 809 lbf	1500 N 337 lbf

**Construction and assembly instructions**



1) The recess in the door for mounting the cam latch / cam lock with gripping tray must be cut as shown in the outline drawing.

The recess dimension y is to be made depending on the sheet metal thickness of the door. The appropriate values are shown in the table

Dimensions in: millimeters - inches

Wall thickness s	x +0.3	y +0.1
0.7 - 1.0 0.03 - 0.04	110 4.33	30.5 1.20
> 1.0 - 1.5 > 0.04 - 0.06	110 4.33	30.7 1.21
> 1.5 - 2.2 > 0.06 - 0.09	110 4.33	31.7 1.25

2) Deburr the recess before fitting the gripping tray.

3) First insert the top of the gripping tray into the opening.

4) Then push in the bottom side until the latch elements clip into place.

3.1  
3.2  
3.3  
3.4  
3.5  
3.6  
3.7  
3.8  
3.9  
3.10