

**SS** Stainless Steel

**1 Type**

- SC** With key (Keyed alike)
- SU** With key (Keyed differently)
- SM** With key (Keyed differently, master key available as accessory)
- DK** With triangular spindle
- VK** With square spindle
- VDE** With double bit

- 4 Identification no.**
- 1** Operation in the illustrated position top left
  - 2** Operation in the illustrated position top right

**Specification**

- Housing / operation bolt  
Plastic  
Technopolymer (Polyamide PA)  
- Glass fiber reinforced  
- Temperature resistant up to 176 °F (80 °C)  
- Black-gray, RAL 7021, matte finish ● **SG**
- **EN 731.2**
  - Latch arm  
Steel, zinc plated
  - Lock cylinder  
Zinc die-cast
  - Key  
Brass, nickel plated
  - Washer / screw (Type SC, SU, SM)  
Steel, zinc plated
  - Washer, screw (Type DK, VK, VDE)  
Stainless steel AISI 304

- **EN 731.5** (only Type DK, VK, VDE)  
Latch arm / washer / screw  
Stainless steel AISI 304
- *Stainless Steel Characteristics → page 2143*
- **RoHS compliant**

**Accessory**

- Master key (for type SM of EN 731.2) can be ordered separately under EN 731.2-SMK

**Information**

EN 731.2 and EN 731.5 cam latches / cam locks with gripping tray are used in applications that require a molded recess in addition to the latching mechanism, e.g. if operating elements are not allowed to protrude for reasons of space. They lock by a turning operation limited to 90°, which moves the latch arm in the locked position behind the door frame.

Latch arms with different bend angles cover a latch arm distance A1 or A2 from 11 to 35 mm (EN 731.2) and from 20 to 26 mm (EN 731.5). The latch arm length can also be selected.

Depending on the type, the latches are supplied with 2 plastic socket keys or 2 brass keys. The key may be pulled off in both end positions.

The details on load bearing capacity F<sub>1</sub> and F<sub>2</sub> were determined with a wall thickness s = 1.5 mm.

For types with the same lock every lock can be opened with the same key. For types with different locks, there are over 400 (type SU) or 160 (type SM) different lock variants with correspondingly numbered keys.

Product comes supplied with a loosely enclosed latch arm.

**How to order (With steel latch arm)**

1 2 3 4 5  
**EN 731.2-SC-2-35-1-SG**

1	Type
2	Latch arm crimping z
3	Latch arm length l
4	Identification no.
5	Color

**How to order (With stainless steel latch arm)**

1 2 3 4 5  
**EN 731.5-VK-3-45-2-SG**

1	Type
2	Latch arm crimping z
3	Latch arm length l
4	Identification no.
5	Color

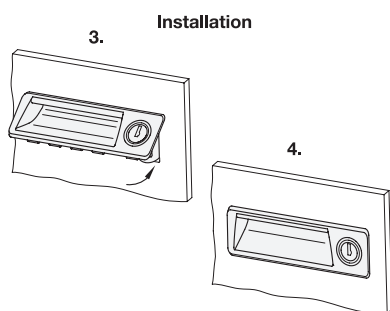
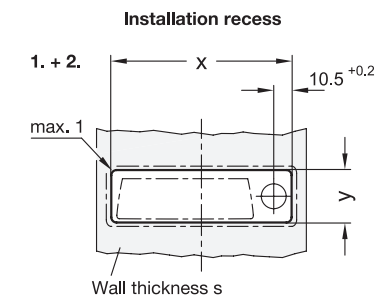
### Metric table

Dimensions in: millimeters - inches

EN 731.2 (Steel latch arm)							F <sub>1</sub>	F <sub>2</sub>
Latch arm crimping z	A <sub>1</sub>	A <sub>2</sub>	Latch arm length l					
0 0	23 0.91	23 0.91	18 0.71	22 0.87	32 1.26	46 1.81	3600 N 809 lbf	1500 N 337 lbf
2 0.08	21 0.83	25 0.98	25 0.98	28 1.10	35 1.38	-	3600 N 809 lbf	1500 N 337 lbf
5 0.20	18 0.71	28 1.10	30 1.18	33 1.30	36 1.42	-	3600 N 809 lbf	1500 N 337 lbf
8 0.31	15 0.59	31 1.22	33 1.30	-	-	-	3600 N 809 lbf	1500 N 337 lbf
12 0.47	11 0.43	35 1.38	27 1.06	-	-	-	3600 N 809 lbf	1500 N 337 lbf

EN 731.5 (Stainless steel latch arm, only available in type DK, VK and VDE)							F <sub>1</sub>	F <sub>2</sub>
Latch arm crimping z	A <sub>1</sub>	A <sub>2</sub>	Latch arm length l					
0 0	23 0.91	23 0.91	20 0.79	32 1.26	46 1.81	-	3600 N 809 lbf	1500 N 337 lbf
3 0.12	20 0.79	26 1.02	45 1.77	-	-	-	3600 N 809 lbf	1500 N 337 lbf

### Construction and assembly instructions



1) The recess in the door for mounting the cam latch / cam lock with gripping tray must be cut as shown in the outline drawing.

The recess dimension y is to be made depending on the sheet metal thickness of the door. The appropriate values are shown in the table

Dimensions in: millimeters - inches

Wall thickness s	x +0.3	y +0.1
0.7 - 1.0 0.03 - 0.04	110 4.33	30.5 1.20
> 1.0 - 1.5 > 0.04 - 0.06	110 4.33	30.7 1.21
> 1.5 - 2.2 > 0.06 - 0.09	110 4.33	31.7 1.25

2) Deburr the recess before fitting the gripping tray.

3) First insert the top of the gripping tray into the opening.

4) Then push in the bottom side until the latch elements clip into place.

3.1  
3.2  
3.3  
3.4  
3.5  
3.6  
3.7  
3.8  
3.9  
3.10

