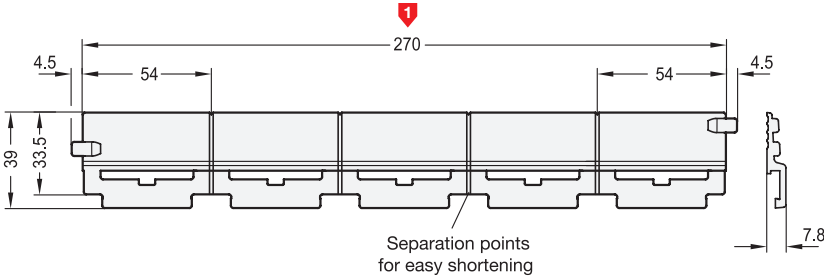
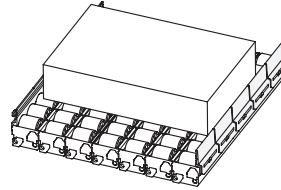
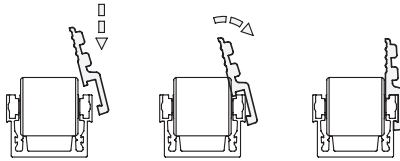


Metric



elesa
ELESA original design RLT-CE



Specification

Plastic, Polyamide (PA)

- Black
- Operating temperature
-4 °F to +194 °F (-20 °C to +90 °C)

RoHS

Containment edge strips EN 646.6 keep the material conveyed within the range of the roller track assemblies.

They can be snapped onto existing roller track assemblies.

The containment edge strips are not designed for use with ball track assemblies (conveyor ball tracks EN 646.2).

At the separation points, the containment edge strips can be shortened to individual total lengths at intervals of 54 mm (2 x 27 mm).

see also...

EN 646.1 Conveyor Roller Tracks

EN 646.3 Carrier Rail Profiles

Page

QVX

QVX

Technical Information

Plastic Characteristics

QVX

How to order

EN 646.4-270

1 Length

3.1
3.2
3.3
3.4
3.5
3.6
3.7
3.8
3.9
3.10