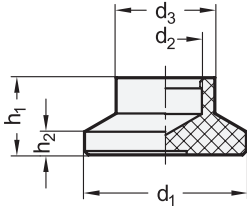
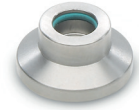
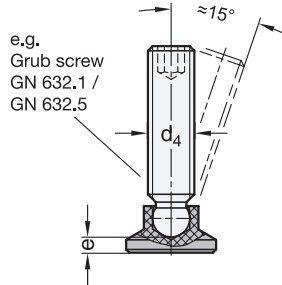


Metric



Mounting example



**SS** Stainless Steel

**Specification**

**GN 631**

**Thrust pad**

Plastic, Polyacetal (POM)

- Operating temperature up to 176 °F (80 °C)
- Black, matte finish

**GN 631.5**

**Thrust pad**

Stainless steel AISI 303

**O-ring**

Fluorine rubber (FKM)

Operating temperature up to 390 °F (200 °C)

RoHS

Thrust pads GN 631 / GN 631.5 are used for clamping and pressing when surfaces must be protected against damage. Depending on the application, various standard parts with ball end are available as accessories.

Together with the thrust pad, the ball end forms a ball joint that adapts to clamping surfaces that are uneven or not perpendicular to the screw axis. It also prevents the clamping surface from rotating when the thrust pad is in contact with the clamping surface.

The ball end snaps securely into the thrust pad and can be removed again if needed.

see also...	Page
<b>GN 638</b> Ball Jointed Leveling Feet	QVX
<b>GN 631.2</b> Thrust Pads (NBR)	QVX

**Technical Information**

Static Load Information	QVX
Plastic Characteristics	QVX

**Accessory**

<b>GN 632.1</b> Grub Screws (Steel)	QVX
<b>GN 632.5</b> Grub Screws (Stainless Steel)	QVX
<b>GN 306</b> Adjustable Levers	QVX
<b>GN 6336.11</b> Star Knobs	QVX
<b>GN 421.11</b> Hollow Knurled Screws	QVX
<b>GN 7336.5</b> Hollow Knurled Knobs	QVX
<b>GN 903</b> Toggle Clamp Spindle Assemblies	QVX
<b>GN 933.5</b> Hex Head Screws	QVX

How to order (Plastic)

<b>GN 631-18-6.1</b>	1	Outer diameter $d_1$
	2	Bore diameter $d_2$

How to order (Stainless steel)

<b>GN 631.5-32-7.8</b>	1	Outer diameter $d_1$
	2	Bore diameter $d_2$

3.1  
3.2  
3.3  
3.4  
3.5  
3.6  
3.7  
3.8  
3.9  
3.10

## Metric table

Dimensions in: millimeters / inches

<b>d<sub>1</sub></b>		<b>d<sub>2</sub></b>	<b>d<sub>3</sub></b>	<b>d<sub>4</sub></b>		<b>e ≈</b>	<b>h<sub>1</sub></b>	<b>h<sub>2</sub></b>	
GN 631	GN 631.5			Metric thread size	Inch thread size				
15 0.59	-	4.5 0.18	8.6 0.34	M 6	1/4 x 20	5/16 x 18	3.6 0.14	7.6 0.30	2.5 0.10
15 0.59	-	6.1 0.24	8.6 0.34	M 8	3/8 x 16	-	2.5 0.10	7.6 0.30	2.5 0.10
18 0.71	-	4.5 0.18	10.8 0.43	M 6	1/4 x 20	5/16 x 18	5.2 0.20	9.2 0.36	2.5 0.10
18 0.71	-	6.1 0.24	10.8 0.43	M 8	3/8 x 16	-	4.2 0.17	9.2 0.36	2.5 0.10
18 0.71	-	7.8 0.31	10.8 0.43	M 10	1/2 x 13	-	3.8 0.15	9.2 0.36	2.5 0.10
21 0.83	21 0.83	4.5 0.18	12.8 0.50	M 6	1/4 x 20	5/16 x 18	6 0.24	10 0.39	3 0.12
21 0.83	21 0.83	6.1 0.24	12.8 0.50	M 8	3/8 x 16	-	5 0.20	10 0.39	3 0.12
21 0.83	21 0.83	7.8 0.31	12.8 0.50	M 10	1/2 x 13	-	4.3 0.17	10 0.39	3 0.12
21 0.83	21 0.83	9.4 0.37	12.8 0.50	M 12	-	-	3.4 0.13	10 0.39	3 0.12
25 0.98	25 0.98	4.5 0.18	13 0.51	M 6	1/4 x 20	5/16 x 18	6.5 0.26	10.5 0.41	3 0.12
25 0.98	25 0.98	6.1 0.24	13 0.51	M 8	3/8 x 16	-	5.5 0.22	10.5 0.41	3 0.12
25 0.98	25 0.98	7.8 0.31	13 0.51	M 10	1/2 x 13	-	4.6 0.18	10.5 0.41	3 0.12
25 0.98	25 0.98	9.4 0.37	13 0.51	M 12	-	-	3.6 0.14	10.5 0.41	3 0.12
32 1.26	32 1.26	4.5 0.18	14 0.55	M 6	1/4 x 20	5/16 x 18	7 0.28	11 0.43	3 0.12
32 1.26	32 1.26	6.1 0.24	14 0.55	M 8	3/8 x 16	-	6 0.24	11 0.43	3 0.12
32 1.26	32 1.26	7.8 0.31	14 0.55	M 10	1/2 x 13	-	5 0.20	11 0.43	3 0.12
32 1.26	32 1.26	9.4 0.37	14 0.55	M 12	-	-	4.2 0.17	11 0.43	3 0.12
40 1.57	40 1.57	6.1 0.24	16 0.63	M 8	3/8 x 16	-	8 0.31	13 0.51	4 0.16
40 1.57	40 1.57	7.8 0.31	16 0.63	M 10	1/2 x 13	-	7 0.28	13 0.51	4 0.16
40 1.57	40 1.57	9.4 0.37	16 0.63	M 12	-	-	6.2 0.24	13 0.51	4 0.16
50 1.97	50 1.97	6.1 0.24	16 0.63	M 8	3/8 x 16	-	10.4 0.41	15.5 0.61	4 0.16
50 1.97	50 1.97	7.8 0.31	16 0.63	M 10	1/2 x 13	-	9.3 0.37	15.5 0.61	4 0.16
50 1.97	50 1.97	9.4 0.37	16 0.63	M 12	-	-	8.7 0.34	15.5 0.61	4 0.16