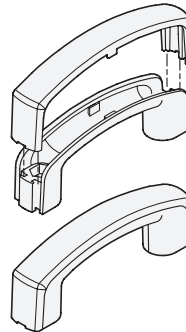
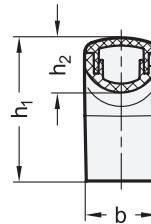
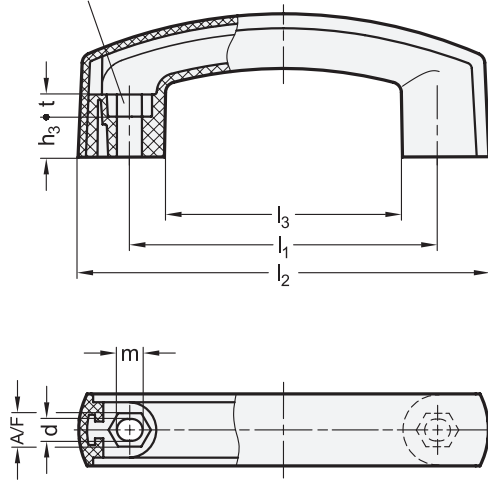


Bore for hex head screw
DIN 931 / ISO 4014



Metric



elesa
Original design EMPC.



3 Type

B Mounting from the operator's side

Metric table

Dimensions in: millimeters / inches

1		2										
l_1	d	b	h_1	h_2	h_3	l_2	l_3	m	A/F	t		
Nominal size	Actual size											
117	118.5 ±1	6.5	28	54.5	21	17.5	159.5	93	8	10	6.5	
4.61	4.665 ±0.039	0.26	1.10	2.15	0.83	0.69	6.28	3.66	0.31	0.39	0.26	
117	118.5 ±1	8.5	28	54.5	21	15.5	159.5	93	10	13	8.5	
4.61	4.665 ±0.039	0.33	1.10	2.15	0.83	0.61	6.28	3.66	0.39	0.51	0.33	

Specification

Handle

- Plastic, Polyamide (PA)
- Glass fiber reinforced
- Operating temperature
-22 °F to +266 °F (-30 °C to +130 °C)
- Black-gray, matte finish, similar to RAL 7021

Cover cap

- Plastic, Polyamide (PA)
- Black-gray, RAL 7021, matte finish
- Orange, RAL 2004, matte finish
- Gray, RAL 7035, matte finish
- Yellow, RAL 1021, matte finish
- Blue, RAL 5024, matte finish
- Red, RAL 3000, matte finish
- Green, RAL 6017, matte finish

- **DSG**
- **DOR**
- **DGR**
- **DGB**
- **DBL**
- **DRT**
- **DGN**

RoHS

The design of the cabinet U-handles EN 629 matches the product family of Ergostyle®.

A typical field of application for these U-handles is doors of protective enclosures on machines and fixtures.

By attaching the cover cap, the two fastening screws are covered. It can be removed using a screwdriver.

The cover caps are supplied loose.

see also...

	Page
EN 528 Cabinet U-Handles (Plastic)	QVX
EN 628 Bridge Handles (Plastic)	QVX
GN 565.1 Cabinet U-Handles (Aluminum)	QVX

Technical Information

Product Family Ergostyle®	QVX
Strength Values	QVX
Plastic Characteristics	QVX

How to order

1	Length l_1 (Nominal size)
2	Bore d
3	Type
4	Color of the cover cap

EN 629-117-6.5-B-DSG

1.1
1.2
1.3
1.4
2.1
2.2
2.3
2.4

