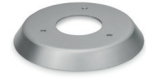
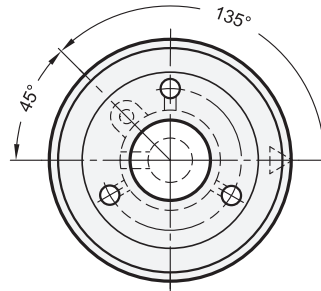
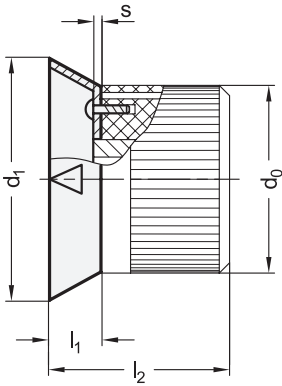


Metric



elesa
Original design F.N/F.K/F.GS

- 2** Type
- A** With arrow
 - B** Neutral
 - S** With scale 0...9, 40 and/or 100 graduations

Metric table

Dimensions in: millimeters / inches

d₀ Knurled control knob Ø EN 526	d₁	l₁	l₂	s	Number of graduation marks Type S
32 1.26	38 1.50	6 0.24	32 1.26	0.8 0.03	40 1.57
42 1.65	50 1.97	7 0.28	39 1.54	1 0.04	40 1.57
48 1.89	55 2.17	8 0.31	43 1.69	1 0.04	100 3.94
52 2.05	63 2.48	9 0.35	48 1.89	1 0.04	100 3.94
63 2.48	78 3.07	13 0.51	57 2.24	1 0.04	100 3.94

Specification

Aluminum

- Anodized finish, natural color
- Arrow for type A
Black, printed
- Scale for type S
Black, printed

RoHS

On request

- Special graduations
(see „How to Order Graduations“)

Control knob flanges EN 526.1 are specifically designed to fit knurled control knobs EN 526.

Also, these control knob flanges can be supplied with any type of graduation. Regarding design, numbering run, numbering position and numbering sequence of the scale please see the layout on the order sheet „How to Order Graduations“.

see also...	Page
EN 526 Knurled Control Knobs (Plastic)	QVX

Technical Information

How to Order Graduations	QVX
--------------------------	-----

How to order

EN 526.1-50-A	1 Outside diameter d₁
	2 Type

