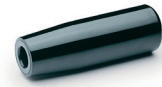
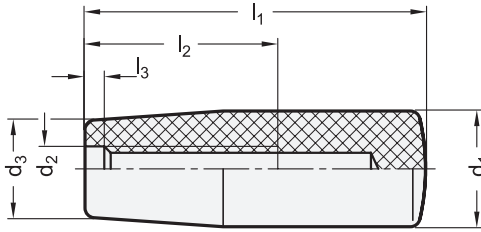


Inch | Metric



elesa
Original design I.280

Inch table

1 2

Dimensions in: inches / millimeters

d_1	d_2	d_3	l_1	l_2 min.	$l_3 \pm 0.02$
0.71 18	1/4 x 20	0.59 15	1.57 40	0.98 25	0.14 3.5
0.83 21	5/16 x 18	0.67 17	1.97 50	1.38 35	0.30 7.5
0.91 23	3/8 x 16	0.75 19	2.56 65	1.57 40	0.30 7.5
1.02 26	3/8 x 16	0.83 21	3.15 80	2.17 55	0.28 7
1.10 28	1/2 x 13	0.87 22	3.54 90	2.28 58	0.31 8

Metric table

1 2

Dimensions in: millimeters / inches

d_1	d_2	d_3	l_1	l_2 min.	$l_3 \pm 0.5$
14 0.55	M 5	11 0.43	28 1.10	12 0.47	1.5 0.06
18 0.71	M 6	15 0.59	40 1.57	25 0.98	3.5 0.14
18 0.71	M 8	15 0.59	40 1.57	25 0.98	3.5 0.14
21 0.83	M 6	17 0.67	50 1.97	25 0.98	3.5 0.14
21 0.83	M 8	17 0.67	50 1.97	35 1.38	7.5 0.30
23 0.91	M 8	19 0.75	65 2.56	30 1.18	7.5 0.30
23 0.91	M 10	19 0.75	65 2.56	40 1.57	7.5 0.30
26 1.02	M 8	21 0.83	80 3.15	45 1.77	7 0.28
26 1.02	M 10	21 0.83	80 3.15	55 2.17	7 0.28
26 1.02	M 12	21 0.83	80 3.15	55 2.17	10 0.39
28 1.10	M 8	22 0.87	90 3.54	45 1.77	7 0.28
28 1.10	M 10	22 0.87	90 3.54	55 2.17	7 0.28
28 1.10	M 12	22 0.87	90 3.54	58 2.28	8 0.31
29 1.14	M 12	23 0.91	116 4.57	58 2.28	8 0.31
31 1.22	M 12	25 0.98	102 4.02	58 2.28	8 0.31

Specification

- Plastic, Phenolic (PF)
- Operating temperature
-4 °F to 230 °F (-20 °C to 110 °C)
 - Black, shiny finish

RoHS

When using cylindrical handles EN 519, the threaded portion of the shaft must be long enough so it seats completely in the handle otherwise, the plastic itself could fail under excessive stress.
Resistant to solvents, oils, grease and other chemical agents.

Technical Information

Plastic Characteristics

Page

QVX

How to order

EN 519-21-5/16X18

- 1 Handle diameter d_1
- 2 Thread d_2

1.1
1.2
1.3
1.4
2.1
2.2
2.3
2.4

