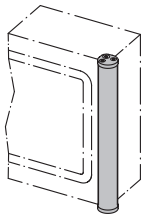
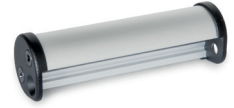
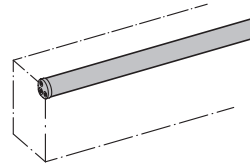


Metric



Application examples

Monitor case



Edge protection

Metric table

Dimensions in: millimeters / inches

¹ $d_1 -0.5$	² l_1	a_1	a_2	d_2	h_1	$h_2 -0.1$	l_2
30 1.18	100 3.94	18 0.71	9 0.35	32 1.26	34.5 1.36	14.5 0.571	106 4.17
30 1.18	200 7.87	18 0.71	9 0.35	32 1.26	34.5 1.36	14.5 0.571	206 8.11
30 1.18	300 11.81	18 0.71	9 0.35	32 1.26	34.5 1.36	14.5 0.571	306 12.05
30 1.18	400 15.75	18 0.71	9 0.35	32 1.26	34.5 1.36	14.5 0.571	406 15.98
30 1.18	500 19.69	18 0.71	9 0.35	32 1.26	34.5 1.36	14.5 0.571	506 19.92

Specification

Tube

- Aluminum
- Black, RAL 9005, textured finish
- Anodized finish, natural color

- SW
- EL

End pieces

- Zinc die-cast
- Powder coated
- Black, RAL 9005, textured finish

Countersunk screws

- Steel
- Self-tapping, with internal Torx® drive
- Black, zinc plated

RoHS

On request

- Special lengths
- Other finishes
- Various metric size fasteners and kit packaging

Edge handles GN 481 are particularly compact and are used, for example, on the side of monitor housings as a handling aid or generally to protect the edges of housings.

Tolerance compensation of 1 mm per end cap simplifies installation. The two end caps are mounted to the handle profile with self-tapping countersunk screws so they can be screwed back on after adjusting the length of the handle without requiring readjustment. This allows the length of the housing to be adapted to any desired size.

How to order

GN 481-30-300-SW

¹	Handle diameter d_1
²	Length l_1
³	Finish