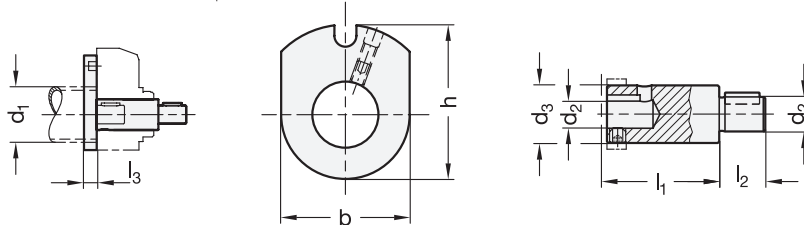
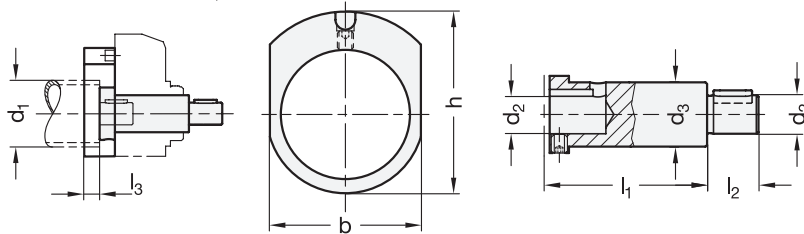


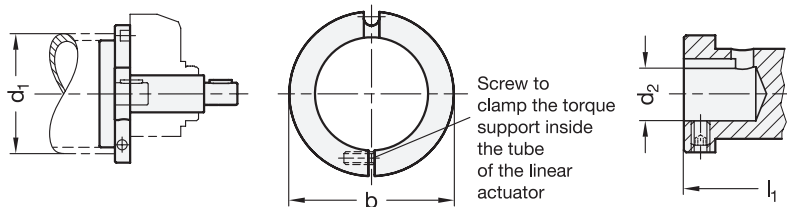
Identification no. 1 (Size  $d_1 = 18 \dots 50$ )



Identification no. 2 (Size  $d_1 = 30 \dots 50$ )



Identification no. 1 and 2 (Size  $d_1 = 60$ )



**3 Identification no.**

- 1 For mechanical position indicators EN 953 / EN 954 / EN 955
- 2 For electronic position indicators EN 9053 / EN 9054

**Metric table**

<b>1</b> $d_1$ Ø Linear actuator	<b>2</b> $d_2$ <sup>H7</sup> / <sub>f6</sub>	<b>b</b>	<b>d<sub>3</sub></b>	<b>h</b>	<b>l<sub>1</sub></b>		<b>l<sub>2</sub></b>	<b>l<sub>3</sub></b>	For position indicator
					Identification no. 1	Identification no. 2			
18 0.71	6 0.24	24 0.94	10 0.39	33 1.30	28 1.10	-	16 0.63	10 0.39	EN 955
30 1.18	8 0.31	35 1.38	14 0.55	42 1.65	35 1.38	42 1.65	15 0.59	10 0.39	EN 954 / EN 9054
40 1.57	12 0.47	47 1.85	20 0.79	56.5 2.22	39 1.54	49 1.93	16 0.63	10 0.39	EN 953 / EN 9053
50 1.97	12 0.47	58 2.28	20 0.79	61 2.40	39 1.54	49 1.93	17 0.67	10 0.39	EN 953 / EN 9053
60 2.36	14 0.55	64 2.52	20 0.79	-	44 1.73	49 1.93	18 0.71	-	EN 953 / EN 9053

Dimensions in: millimeters - inches

**Specification**

- Adaptor shaft  
Steel, blackened finish
- Torque support  
Aluminum, black anodized finish
- ISO Fundamental Tolerances → page 2129
- RoHS compliant

**Accessory**

- Position indicators and handwheels have to be ordered separately.

**On request**

- Linear actuators with analog position indicator GN 000.8

**Information**

GN 295 installation kits are required for mounting a position indicator on linear actuators. The kit consists of an adaptor shaft and a torque support including mounting screws.

When ordering EN 953 / EN 954 / EN 955 mechanical position indicators, a counter needs to be chosen that matches the pitch of the trapezoidal thread sprindle.

For EN 9053 / EN 9054 position indicators, the corresponding pitch is set on the position indicator by programming.

see also...

- Digital Position Indicators EN 953 / EN 954 → page 372 / page 374
- Digital Position Indicators EN 9053 / EN 9054 → page 378 / page 380
- Linear Actuators → starting from page 1948
- Drive / Transfer Units GN 391 → www.jwwinco.com

How to order

**GN 295-30-8-2**

<b>1</b>	Linear actuator diameter $d_1$
<b>2</b>	Linear actuator thread diameter $d_2$
<b>3</b>	Identification no.