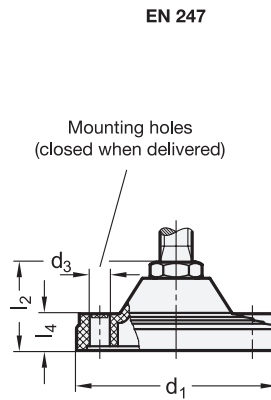
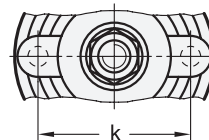
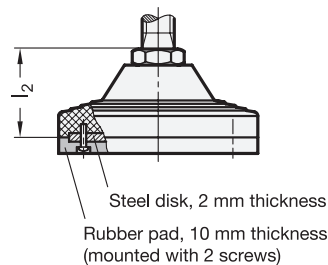


Type A / B



Type AG / BG



**4 Type**

- A** Without nut, without rubber pad
- B** With nut, without rubber pad
- AG** Without nut, with rubber pad
- BG** With nut, with rubber pad

**Metric table**

<b>1</b> d <sub>1</sub>	<b>2</b> d <sub>2</sub> Thread	<b>3</b> l <sub>1</sub>		l <sub>2</sub>	l <sub>3</sub>	l <sub>4</sub>	d <sub>3</sub>	k	A/F	Static load (See information)
125 4.92	M 20	95 3.74	155 6.10	55 2.17	45 1.77	23 0.91	12.5 0.49	95 3.74	24 0.94	40 kN 8992 lbf
125 4.92	M 24	95 3.74	155 6.10	55 2.17	45 1.77	23 0.91	12.5 0.49	95 3.74	24 0.94	40 kN 8992 lbf
125 4.92	M 30	155 6.10	-	55 2.17	45 1.77	23 0.91	12.5 0.49	95 3.74	30 1.18	40 kN 8992 lbf

Dimensions in: millimeters - inches

**Specification**

- Base  
Plastic  
Technopolymer (Polyamide PA)  
- Glass fiber reinforced  
- Temperature resistant up to 212 °F (100 °C)  
- Black, matte finish
- Threaded stud  
Steel  
- Property class 5.8  
- Zinc plated, blue passivated finish
- Hex nut DIN 934  
Steel, zinc plated, blue passivated finish
- Rubber pad  
Perbunan® (NBR) 90 shore A  
- Black  
- Reinforced by zinc plated steel disk
- *Strength Values of Screws* → page QVX
- *Plastic Characteristics* → page QVX
- RoHS compliant

**Information**

EN 246 and EN 247 leveling feet are characterized by a high static load capacity. The cost-effective stud-to-base connection allows a swivel of  $\pm 2^\circ$ .

The static load capacity listed in the table is to be used as a guide only. Exceeding these load capacities may cause permanent deformation or breakage of the plastic base.

The values in the table were determined by a series of tests, where a limited number of leveling feet were subjected to a vertical static load, in relation to the foot, for a limited time.

How to order (without Mounting Holes)	<b>1</b> Base diameter d <sub>1</sub>
	<b>2</b> Thread d <sub>2</sub>
<b>EN 246-125-M30-155-AG</b>	<b>3</b> Stud length l <sub>1</sub>
	<b>4</b> Type

How to order (with Mounting Holes)	<b>1</b> Base diameter d <sub>1</sub>
	<b>2</b> Thread d <sub>2</sub>
<b>EN 247-125-M24-95-B</b>	<b>3</b> Stud length l <sub>1</sub>
	<b>4</b> Type