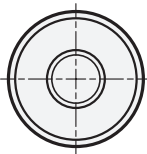
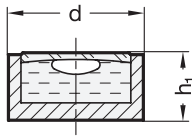
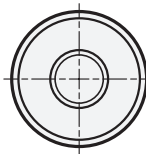
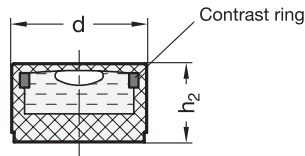


Version **ALS**



Version **KT**



4 Sensitivity

10 Angular minutes, bubble moves by 2 mm (only version ALS)

40 Angular minutes, bubble moves by 2 mm (only version KT)

5 Identification no.

1 Without contrast ring

2 With contrast ring (only version KT for d = 12-18)

Metric table

2

Dimensions in: millimeters - inches

d	h ₁	h ₂
10 0.39	6.9 0.27	6 0.24
12 0.47	6.4 0.25	7 0.28
14 0.55	6.2 0.24	8 0.31
15 0.59	7.4 0.29	8 0.31
18 0.71	7.3 0.29	9 0.35

Specification

1 3

- Housing
 - Aluminum
 - Anodized finish, black **● ALS**
 - Viewing window, glass
 - Plastic, white
 - Viewing window, transparent **○ KT**
- Filling
 - Colorless transparent **K**
 - Green transparent (only version KT) **G**
- RoHS compliant

Information

GN 2281 bull's eye spirit levels are suitable for installation in plates and housings where they serve to check the horizontal position of jigs, machines and devices, due to their cylindrical design.

These bull's eye spirit levels are not aligned, e.g. there is no reference to the external outline of the spirit level. The vertical position must be ensured by aligning the holding element.

The black housing of the version ALS creates a reflection at the edge of the bubble which significantly improves the readability. Version KT is available with a contrast ring inside the air spirit level housing (Identification no. 2) which creates the same effect.

Alternatively, the contrast can also be improved by a dark surface inside the mounting bore hole.

see also...

- General Information on Bull's Eye, Screw-On, and Cross Spirit Levels → page 324

On request

- Other sensitivities

How to order	
1 Material	
2 Outside diameter d	
3 Filling	
4 Sensitivity	
5 Identification no.	

GN2281-ALS-14-K-10-1