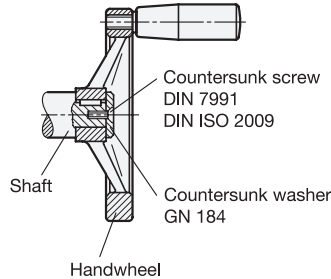
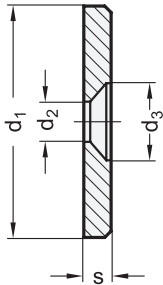


Application example:  
Mounting  
of a handwheel  
with keyway  
on a shaft



Metric



**Metric table**



Dimensions in: millimeters / inches

d <sub>1</sub>	d <sub>2</sub>	d <sub>3</sub>	s	For countersunk screws DIN 7991 / DIN ISO 2009 with thread size
12 0.47	3.2 0.13	6.5 0.26	2.5 0.10	M 3
16 0.63	4.3 0.17	8.5 0.33	3 0.12	M 4
20 0.79	4.3 0.17	8.5 0.33	3 0.12	M 4
22 0.87	5.3 0.21	10.3 0.41	3.5 0.14	M 5
25 0.98	5.3 0.21	10.3 0.41	3.5 0.14	M 5
28 1.10	5.3 0.21	10.3 0.41	3.5 0.14	M 5
32 1.26	6.4 0.25	12.3 0.48	4 0.16	M 6
36 1.42	6.4 0.25	12.3 0.48	4 0.16	M 6
40 1.57	6.4 0.25	12.3 0.48	5 0.20	M 6
45 1.77	6.4 0.25	12.3 0.48	6 0.24	M 6
52 2.05	6.4 0.25	12.3 0.48	6 0.24	M 6

**Specification**



**GN 184**

**Steel**

- Turned
- Blackened finish
- Zinc plated, blue passivated finish

—  
**ZB**

**GN 184.5**

**Stainless steel** AISI 303

- Turned
- Matte shot-blasted finish

RoHS

Countersunk washers GN 184 / GN 184.5 are retained to the face of the shaft end with countersunk screws DIN 7991 / DIN ISO 2009, forming a clean-look end cap.

A typical application example would be the retention of a handwheel with keyway to a shaft.

How to order (Steel, blackened)	1	d <sub>1</sub>
<b>GN 184-28</b>		

How to order (Steel, zinc plated)	1	d <sub>1</sub>
<b>GN 184-36-ZB</b>	2	Finish

How to order (Stainless steel)	1	d <sub>1</sub>
<b>GN 184.5-36</b>		

3.1  
3.2  
3.3  
3.4  
3.5  
3.6  
3.7  
3.8  
3.9  
3.10

