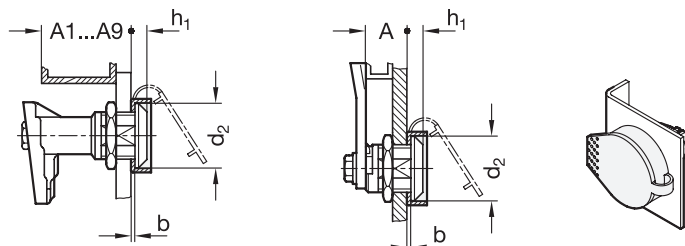


Application examples



Cam door latches GN 119

Cam latches GN 115

Metric table

Dimensions in: millimeters - inches

d ₁	s	b	h ₁	h ₂	Length l	Usable for *	GN 115	GN 115.1	GN 115.6	GN 115.8	GN 115.9	GN 119	GN 515	GN 516	GN 516.1	GN 516.5
							d ₂									
29 1.14	14.5 0.57	2 0.08	6 0.24	11 0.43	18.5 0.73	20 / 22 0.79 / 0.87	-	x	x	-	-	-	-	-	-	-
36 1.42	20.5 0.81	2 0.08	8 0.31	12 0.47	23 0.91	28 / 30 / 32 1.10 / 1.18 / 1.26	x	-	-	x	x	x	x	x	x	x

* Used for latches actuated by key / socket key

Specification

- Plastic
Technopolymer (Polyethylene)
Black
- *Plastic Characteristics* → page QVX
- **RoHS compliant**

Information

GN 120 protective caps are used in combination with key-actuated latching / locking devices. They prevent dirt from entering the key mechanism and the latching device and can be mounted as required in a 90° grid pattern together with the housing of the latching device.

Please note: The clamping range A1 ... A9 and / or the latch distance A is reduced by the dimension b.

see also...

- *List of Cam Latch / Cam Lock Types* → page XYZ
- *Protective Guide Plates GN 120.2* → page XYZ
- *Internal Cabinet Handles GN 120.3* → page XYZ

How to order

GN 120-36-20.5

1 Diameter d

2 Square s