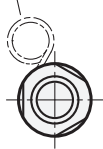
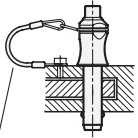


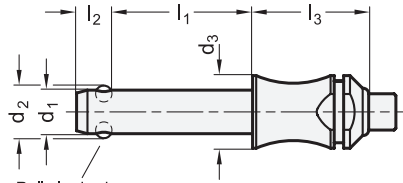
Eye ring (removable)



Application example



Retaining cable GN 111.2



Balls locked

Marking for material
AISI 630 (GN 113.4)

Finger recess

Push button

Balls unlocked

Groove for eye ring

Metric



SS Stainless Steel

Metric table



Dimensions in: millimeters / inches

d_1 -0.04 -0.08	$l_1 +0.6$																d_2	d_3	l_2 ± 1	l_3 $+0.2$	Location bore H11
5 0.197	10 0.394	15 0.591	20 0.787	25 0.984	30 1.181	35 1.378	40 1.575	45 1.772	50 1.969	60 2.362	70 2.756	80 3.150	-	-	-	5.5 0.22	10 0.39	6 0.24	22 0.866	5 0.197	
6 0.236	10 0.394	15 0.591	20 0.787	25 0.984	30 1.181	35 1.378	40 1.575	45 1.772	50 1.969	60 2.362	70 2.756	80 3.150	-	-	-	7 0.28	10 0.39	7 0.28	22 0.866	6 0.236	
8 0.315	10 0.394	15 0.591	20 0.787	25 0.984	30 1.181	35 1.378	40 1.575	45 1.772	50 1.969	60 2.362	70 2.756	80 3.150	90 3.543	100 3.937	-	9.5 0.37	14 0.55	8.2 0.32	27 1.063	8 0.315	
10 0.394	15 0.591	20 0.787	25 0.984	30 1.181	35 1.378	40 1.575	45 1.772	50 1.969	60 2.362	70 2.756	80 3.150	90 3.543	100 3.937	110 4.331	120 4.724	12 0.47	14 0.55	9.6 0.38	27 1.063	10 0.394	
12 0.472	20 0.787	25 0.984	30 1.181	35 1.378	40 1.575	45 1.772	50 1.969	60 2.362	70 2.756	80 3.150	90 3.543	100 3.937	110 4.331	120 4.724	-	14.5 0.57	20 0.79	10.6 0.42	32 1.260	12 0.472	
16 0.630	30 1.181	35 1.378	40 1.575	45 1.772	50 1.969	60 2.362	70 2.756	80 3.150	90 3.543	100 3.937	110 4.331	120 4.724	130 5.118	140 5.512	150 5.906	19 0.75	20 0.79	14 0.55	32 1.260	16 0.630	
20 0.787	50 1.969	60 2.362	70 2.756	80 3.150	90 3.543	100 3.937	110 4.331	120 4.724	130 5.118	140 5.512	150 5.906	-	-	-	-	25 0.98	28 1.10	20.5 0.81	39 1.535	20 0.787	
25 0.984	50 1.969	60 2.362	70 2.756	80 3.150	90 3.543	100 3.937	110 4.331	120 4.724	130 5.118	140 5.512	150 5.906	-	-	-	-	30.8 1.21	28 1.10	22 0.87	39 1.535	25 0.984	

Specification

GN 113.3

Stainless steel AISI 303

GN 113.4

Stainless steel AISI 630

Precipitation hardened

Balls

Stainless steel AISI 420C

Spring

Stainless steel AISI 631

Eye ring

Stainless steel AISI 301

Operating temperature up to 480 °F (250 °C)

RoHS

Accessory

GN 1140 Holding Bushings	QVX
GN 111 Ball Chains	QVX
GN 111.5 Ball Chains	QVX
GN 111.2 Retaining Cables	QVX
GN 111.4 Spiral Retaining Cables	QVX
DIN 172 Press-Fit Drill Bushings	QVX
DIN 179 Press-Fit Drill Bushings	QVX

Ball lock pins GN 113.3 / GN 113.4 are used for rapid connecting and securing of components or workpieces. They are useful and renowned for their compact design. A typical application is locating pins that have to regularly be moved in and out of position.

The ball lock pins GN 113.4 have a high load capacity, due to the pin being made of heavy duty, hardened and highly abrasion-resistant stainless steel. By depressing the spring loaded push button, the two balls are freed, and by releasing the push button the balls are locked.

The loss protection eye ring is enclosed unmounted.

The technical section contains the load ratings for the double shear strength (breaking strength).

Technical Information

	Page
Load Rating Information	QVX
ISO Fundamental Tolerances	QVX
Stainless Steel Characteristics	QVX

How to order (Stainless steel shank AISI 303)

GN 113.3-6-20

1	Pin diameter d_1
2	Length l_1

How to order (Stainless steel shank AISI 630)

GN 113.4-8-35

1	Pin diameter d_1
2	Length l_1

3.1
3.2
3.3
3.4
3.5
3.6
3.7
3.8
3.9
3.10