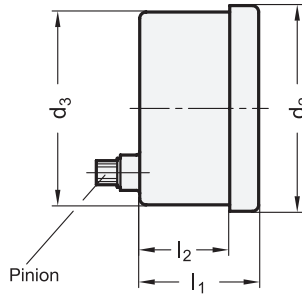
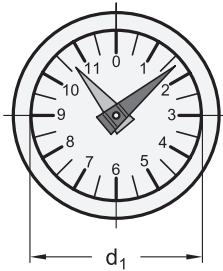


Metric



elesa
Original design PA11 / PA12

3 Type

- R** Numbers increasing clockwise
- L** Numbers increasing counter-clockwise

Metric table

1		2				Dimensions in: millimeters / inches				
d ₁	Reduction counting gear				d ₂	d ₃	l ₁	l ₂		
42 1.65	2:1	10:1	20:1	40:1	72:1	49.8 1.96	48.2 1.90	30 1.18	23 0.91	
42 1.65	4:1	12:1	24:1	48:1	100:1	49.8 1.96	48.2 1.90	30 1.18	23 0.91	
42 1.65	6:1	15:1	30:1	50:1	-	49.8 1.96	48.2 1.90	30 1.18	23 0.91	
42 1.65	8:1	16:1	36:1	60:1	-	49.8 1.96	48.2 1.90	30 1.18	23 0.91	
60 2.36	2:1	10:1	24:1	50:1	150:1	68.5 2.70	67 2.64	32 1.26	25 0.98	
60 2.36	4:1	12:1	30:1	60:1	-	68.5 2.70	67 2.64	32 1.26	25 0.98	
60 2.36	6:1	16:1	36:1	72:1	-	68.5 2.70	67 2.64	32 1.26	25 0.98	
60 2.36	8:1	20:1	40:1	100:1	-	68.5 2.70	67 2.64	32 1.26	25 0.98	

Specification

Housing

- Plastic, Polyamide (PA)
- Glass fiber reinforced
- Black, matte finish

Sight glass

- Plastic, Polyamide (PA)
- Transparent
- Shock and aging resistant

Housing / Sight glass

- Operating temperature
32 °F to 212 °F (0 °C to +100 °C)
- Oil and solvent proof
(not suitable for alcohol)

Pointer arms

- Plastic
- Long pointer arm: red
- Short pointer arm: black

Scale

- Aluminum
- Matte, anodized finish
- Black graduation lines and numbers

Protection class IP 65

RoHS

On request

- Special scales

Position indicators EN 000.9 are suitable for installation in various types of operating elements.

Housing, and all internal components are produced from one single piece of material and ultrasonically welded assembly. They are spray waterproof and corrosion proof (Protection class IP 65).

The positive drive type installation allows the position indicator to be used in any position, even in applications with strong vibrations.

The reducing ratio shows the number of revolutions (long red pointer arm) required per 1 complete revolution of the short pointer arm.

see also...	Page
EN 000.13 Position Indicators (Positive Drive, with Digital / Analog Display)	QVX

Technical Information

More Information on Position Indicators EN 000.9	QVX
IP Protection Classes	QVX
Plastic Characteristics	QVX

Accessory

EN 534.9 Knurled Hand Knobs	QVX
EN 577.9 Multi-Lobed Handwheels	QVX
GN 323.9 Solid Disk Handwheels	QVX

How to order

EN 000.9-60-12-L

- 1 Outside diameter d₁
- 2 Reduction
- 3 Type

