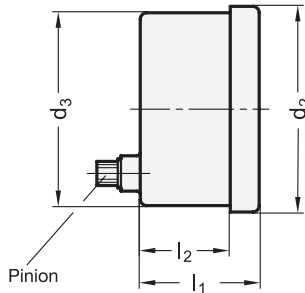
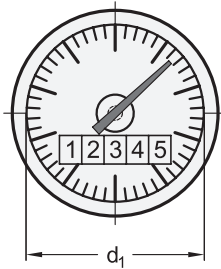


Metric



elesa
Original design PW12

3 Type

- R** Numbers increasing clockwise
- L** Numbers increasing counter-clockwise

Metric table

d ₁	Counter	Indication after 1 spindle revolution	Corresponds to thread pitch in millimeters per revolution	Scale		d ₂	d ₃	l ₁	l ₂
				Number of graduations	Indication precision of the pointer				
60 2.36	0000.2	00002	0.2	20	0.01	68.5 2.70	67 2.64	33 1.30	26 1.02
60 2.36	0000.5	00005	0.5	50	0.01	68.5 2.70	67 2.64	33 1.30	26 1.02
60 2.36	0001.0	00010	1	100	0.01	68.5 2.70	67 2.64	33 1.30	26 1.02
60 2.36	0002.0	00020	2	40	0.05	68.5 2.70	67 2.64	33 1.30	26 1.02
60 2.36	0002.5	00025	2.5	50	0.05	68.5 2.70	67 2.64	33 1.30	26 1.02
60 2.36	0003.0	00030	3	60	0.05	68.5 2.70	67 2.64	33 1.30	26 1.02
60 2.36	0004.0	00040	4	80	0.05	68.5 2.70	67 2.64	33 1.30	26 1.02
60 2.36	0005.0	00050	5	100	0.05	68.5 2.70	67 2.64	33 1.30	26 1.02

Dimensions in: millimeters / inches

Specification

Housing

- Plastic, Polyamide (PA)
- Glass fiber reinforced
- Black, matte finish

Sight glass

- Plastic, Polyamide (PA-T)
- Transparent
- Shock and aging resistant

Housing / Sight glass

- Operating temperature 32 °F to 212 °F (0 °C to +100 °C)
- Oil and solvent proof (not suitable for alcohol)

Pointer arm

Plastic, red

Scale

- Aluminum
- Matte anodized finish
- Black graduation lines

Counter

- White numbers
- Black number wheels integers
- Red decimals

Protection class IP 65

RoHS

On request

- Special scales

Position indicators EN 000.13 have been designed for installation in various types of operating elements.

Housing, hand spindles, and sight glass are produced from one single piece of material, welded ultrasonically. They are spray waterproof and corrosion proof (Protection class IP 65).

The installation principle with the positive drive allows the use of EN 000.13 position indicators in any position, even in applications with strong vibration. One complete revolution of the red pointer corresponds to one revolution of the spindle. This gives very accurate readings, and combined with the digital indication from the counter, is very simple to read.

see also...

	Page
EN 000.9 Position Indicators (Analog Display)	QVX

Technical Information

More Information on Position Indicators EN 000.13	QVX
IP Protection Classes	QVX
Plastic Characteristics	QVX

Accessory

EN 534.9 Knurled Hand Knobs	QVX
EN 577.9 Multi-Lobed Handwheels	QVX
GN 323.9 Solid Disk Handwheels	QVX

How to order

1 Outside diameter d ₁
2 Counter
3 Type

EN 000.13-60-0001.0-R

